



# Comparative Orthopaedic Lab

"Finding a joint solution"

<http://medicine.missouri.edu/columc.com/>

## Current Projects

- BioCartilage versus Marrow Stimulation
- Comparing BMC Harvest Sites
- Monitoring Meniscal Health with Ultrasound
- Bioreactor for Disc Disease Modeling
- Improving OCA Implantation Instruments
- Fresh Meniscus-OCA Grafts
- Subchondroplasty for PTOA
- PRP for ACL Healing
- Early Diagnosis of Hip Dysplasia
- Meniscal Tissue Engineering
- Novel Model for Post-ACL Treatment
- Biomarkers for Osteoarthritis

## Last quarter's "top 5"

1. Dr. Arleigh Reynolds agrees to be our Littlejohn Family Keynote Speaker for CO Day 2015
2. Mizzou Orthopaedics Team receives three Coulter grants for 2014-2015
3. Mizzou's Motion Analysis Center, lead by Dr. Trent Guess, is officially launched
4. COL investigators receive Dept of Defense grant in collaboration with Columbia University
5. Mizzou Orthopaedics Team has 5 papers accepted for presentation at AAOS 2015

## Landmark Article Published

The COL team had a landmark article published in *Clinical Orthopaedics & Related Research*. This publication details our innovative work investigating a novel method for preserving osteochondral allografts for biologic joint replacements we are currently performing in patients.

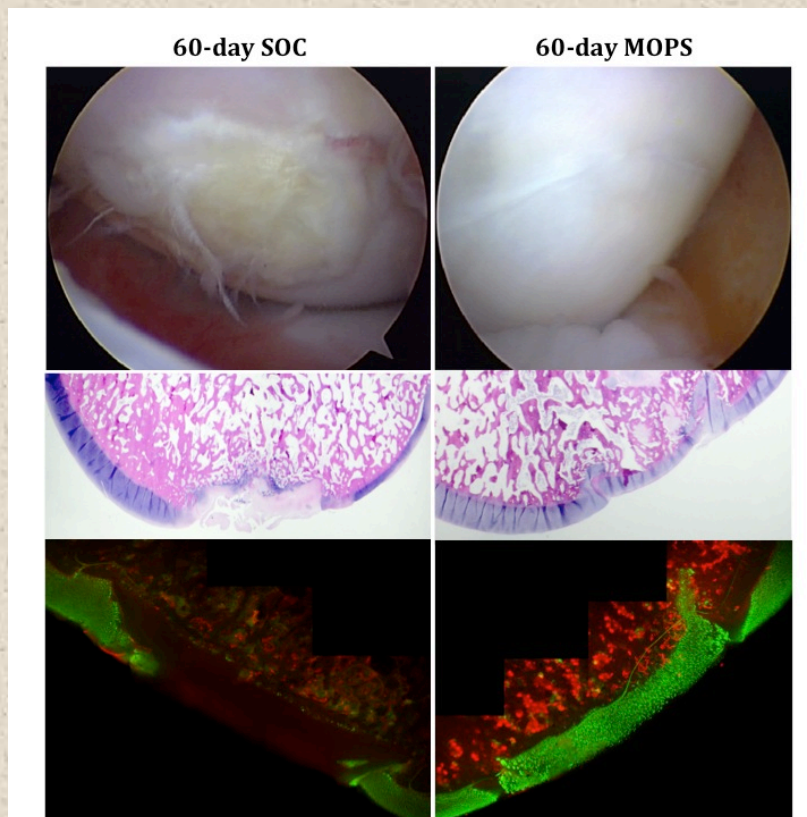
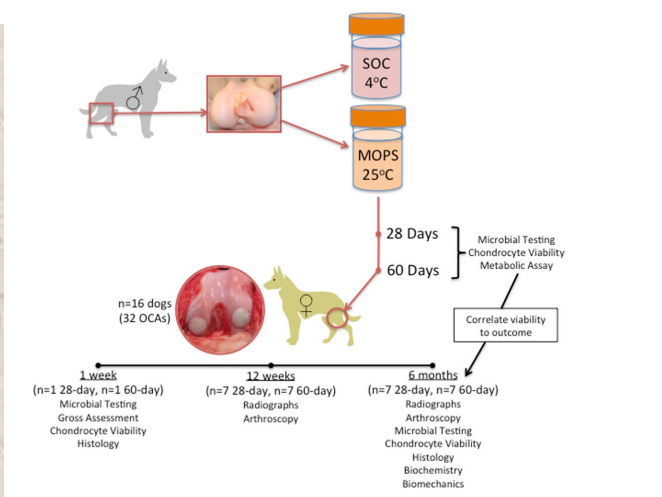
Clin Orthop Relat Res  
DOI 10.1007/s11999-014-3773-9

**BASIC RESEARCH**

**Clinical Orthopaedics and Related Research**  
A Publication of The Association of Bone and Joint Surgeons®

**A Novel System Improves Preservation of Osteochondral Allografts**

James L. Cook DVM, PhD, Aaron M. Stoker PhD, James P. Stannard MD, Keiichi Kuroki DVM, PhD, Cristi R. Cook DVM, MS, Ferris M. Pfeiffer PhD, Chantelle Bozynski DVM, MSc, Clark T. Hung PhD



## Recent Pubs

1. Cook JL, et al. A novel system improves preservation of osteochondral allografts. Clin Orthop Rel Res 2014
2. Farr J, et al. Effects on exposed cartilage during open surgical procedures: a comparison of various fluids. Arthroscopy 2014
3. Waters NP, et al. Biomarkers affected by impact velocity and maximum strain of cartilage during injury. J Biomech 2014
4. Pfeiffer FM, et al. Histologic and biomechanical responses of small glenoid anchors for labral repair. J Shoulder Elbow Surg 2014
5. Cook JL, et al. Animal models of cartilage repair. Bone Joint Res 2014
6. Waters NP, et al. Biomarkers affected by impact severity during osteochondral injury. J Knee Surg 2014
7. Stannard JP, et al. Hinged external skeletal fixation in the treatment of knee dislocations. J Bone Joint Surg 2014